

Welcome

Take a moment to allow yourself to fully arrive in this space.

We'll begin soon

innrwrks

The Regenerative Business Transformation

- a free session series

(part 2)

innrwrks

innwrks

a transformation lab/studio
for regenerative business



Tools



Ventures



Consulting

Our question

How can we transform business
to create the world we want our kids to live in?

innrwrks

The journey we're on...

Work & Business	Personal	Relational	Systemic
Culture & Worldview	New What	New How	New Who
Economy & Society	Value	Consumption	Exchange

We live in a time between worlds...

innrwrks

... what's your in-between?

In what areas are you confused?

What no longer makes sense?

Work & Business

The Systemic

innrwrks

“The major problems in the world are the result of the difference between how nature works and the way people think.”

- *Gregory Bateson*

innrwrks



Epistemic (media, social media etc.)



Mental health (drugs, depression, burnout)



Biodiversity



The Meta "Pickle"
[Crisis?]



Education



Climate (air, soil, oceans, ecology)



Political (geopolitical, polarisation, energy)



Economic (instability, overconsumption)

innrwrks

Systemic shifts rests on worldviews



Rational



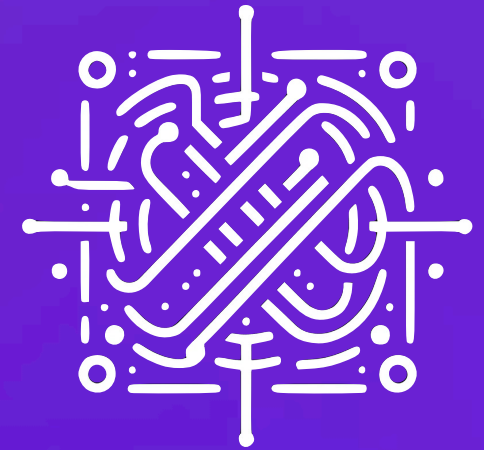
EMBODIED



Certain



UNCERTAIN



Mechanical



RELATIONAL

innrwrks

Relax into sensemaking



Our cognitive processes are deeply rooted in the body's interactions with the world. Structural coupling refers to the continuous, reciprocal interaction between an organism and its environment. This shapes both the organism's structure and its actions.

- Embodied Mind (1992) *Francisco Varela, Elenor Rosch, Evan Thompson*

Rational



EMBODIED

innrwrks

Relax into knowing



Certain

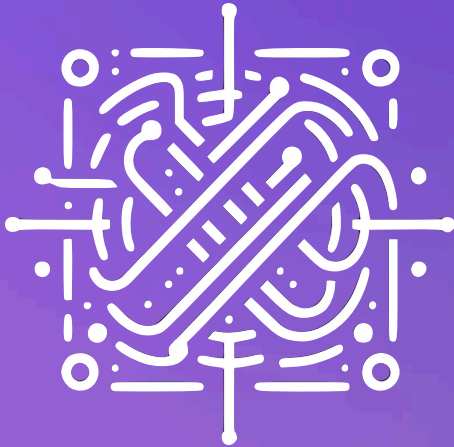


UNCERTAIN

A contextual world beyond simple answers. E.g. Cynefin that proposes that based on the system's level of predictability and the relationship between cause and effect, guiding how to approach and solve different types of problems.

- Dave Snowden, cynefin.io

Relax into interdependence



Mechanical



RELATIONAL

The systemic (relational) worldview emphasizes that everything is part of larger, interconnected systems, suggesting that understanding complex phenomena requires looking at the **relationships, patterns, and context within these systems rather than just their individual components.**

- Donatella Meadows, Gregory Bateson, Fritjof Capra

Bridges between paradigms

EFFICIENCY



RISK



VALUE



Rational
Certain
Mechanical



EMBODIED
UNCERTAIN
RELATIONAL

innrwrks

Two tools for revealing...

innwrks

CONSCIOUSNESS

CAPACITY

CULTURE



THINGS ↔ PROCESS ↔ RELATION ↔ ESSENCE

Question to explore

What could you relax that would increase your agency?

Our exploration

Work & Business	Personal	Relational	Systemic	Tools: RCO
Culture & Worldview	New What	New How	New Who	Tools: Meadow Mapping
Economy & Society	Value	Consumption	Transactions	Tools: Flow Accounting

innrwrks

innwrks

a transformation lab/studio
for regenerative business



Tools



Ventures



Consulting

Thank you

and welcome back for part 3, March 28st

innrwrks.com

innrwrks

For the interested...

innrwrks

Efficiency has to nourish “the world”



EFFICIENCY

From a systemic worldview, efficiency is defined as the **ability of a system to achieve its desired outcomes with a minimum expenditure of energy, resources, and time, while also considering the impact of its actions on other parts of the system and the environment.** This perspective emphasizes **not just the optimization of individual components**, but the overall functioning and sustainability of the entire system [...]

Perspective holders: Donatella Meadows, Fritjof Capra, Peter Senge, Russel Akoff

Perspective shifting is key to insight



RISK

For a business owner or C-suite executive facing the meta-crisis, managing risk involves **adopting a holistic, agile approach to decision-making that incorporates sustainability, resilience, and ethical considerations into the core business strategy**, while actively engaging with stakeholders to navigate and mitigate the impacts of interconnected global crises on operations, supply chains, and markets.

Perspective holders: Peter Senge, Kate Raworth, John Fullerton

Value is culturally defined



VALUE

"The Value of Everything" by Mariana Mazzucato argues for **redefining value creation in the economy by distinguishing between wealth-creating activities that drive sustainable economic growth** and those that extract wealth without contributing to societal well-being, advocating for a more inclusive and holistic approach to understanding economic value beyond the narrow confines of market prices.

- Mariana Mazzucato "The value of everything"